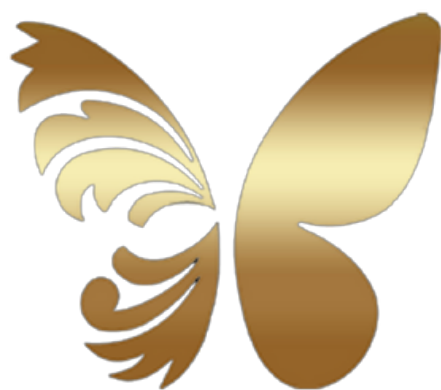


# Kallima

THE SPA AT LONDON SYON PARK



# SPA DAYS



## **THE BUTTERFLY JOURNEY - 120 MIN / £230PP**

Experience this blissful Journey with a deluxe head to toe body experience.

60 Minutes detoxifying body wrap

60 Minutes Well-being Massage

Light Lunch and a glass of prosecco

**2 hours use of spa facilities**



## **JOURNEY OF TRANQUILITY – 105 MIN / £210PP**

Find the perfect state of balance

60 minutes Aromatherapy Massage

45 minutes Personalised Elemis Facial

A bowl of strawberries & a glass of prosecco

**2 hours use of spa facilities**



## **JET LAG RECOVERY – 90 MIN / £185PP**

Whether you are recovering from extensive travel or a hectic lifestyle this ritual will revive you from head to toe.

45 minutes Deeper than Deep Hot Stone Back Massage

30 minutes Personalised ELEMIS facial

15 minutes Frangipani Foot Treatment

Light Lunch

**2 hours use of spa facilities**



## **REJUVENATE – 60 MIN / £125**

Relax and restore with this dream well rounded treatment.

A choice of 60 minutes De-stress Massage or 60 minutes Elemis Personalised facial

Glass of Prosecco

**One hour facilities use**



## **TWILIGHT SPA TREAT – 30 MIN / £99**

(Monday to Friday 5:30 to 8:30 pm)

A choice of any Kallimini 30 minutes treatment

One course dinner from a set menu

**One hour facilities use**



## **KALLIMINI MORNING SPA TREAT / £99**

(Monday to Friday 7:00am to 10:30 am) - Breakfast serve between 7:00am to 9:30m

A choice of any 30 minutes Kallimini treat

Full English breakfast served with tea or coffee - Mood in the Park Restaurant

**One hour facilities use**



# SIGNATURE SPA RITUALS

## **THE SUPERBOTANICALS BODY EXPERIENCE / 90 MIN £145**

The experience begins with an invigorating exfoliation of frangipani oil and salt scrub to eliminate dead cells while bringing to the skin a sensation of purity followed by de-stress back massage and a mini personalised ELEMIS express facial.

## **MUSUMI – DE-STRESS / 120 MIN £245PP**

Combining the best of our facial and body treatments with a 60 minute deeper than deep hot stone rhythmic massage and a 60 minutes Elemis personalized facial to you skin needs. Deeply relaxing at all levels.

## **KAZUMIN – INFUSE COUPLE RETREAT / 90 MIN £285**

Escape the usual and unwind side-by-side with a partner or friend with our couple signature experience for two. It could be the perfect date with that special someone or a friend to relax and spend time together. This journey of pure bliss combines 60 minutes of De-stress massage and an Express personalised ELEMIS facial.

# BODY TREATMENTS

## **DE-STRESS MASSAGE / 60 MINUTES £120**

This flowing medium pressure massage synergy, relaxes and harmonises the body. Using hand selected pure essential oils.

## **DEEPER THAN DEEP HOT STONE MASSAGE / 60 MINUTES £145 / 90 MINUTES £190**

Balinese stones drenched in Frangipani Monoi Body Oil are worked deep into the muscles, targeting areas of tension. Promoting absolute warmth and relaxation.

## **FREESTYLE DEEP TISSUE MASSAGE / 60 MINUTES £145**

Your technician, will select an aromatic oil according to your concerns, including muscle pain, stress relief, relaxation or balance.

## **PEACEFUL PREGNANCY MASSAGE / 60 MINUTES £120**

Mothers- to-be are restored to optimum wellness. An intuitive, and relaxing massage hydrates the skin that is expanding to accommodate a growing baby.

## **NUTRIENT-RICH DETOX WRAP / 45 MINUTES £95**

Our nutrient rich detox wrap uses deeply nourishing Green Tea Balm or with Frangipani Oil to encourage super skin health and powerful detoxification. It helps stimulate the elimination process and restore equilibrium to leave you feeling completely reinvigorated.

## **INTENSELY CLEANSING EXFOLIATION / 45 MINUTES £95**

Invigorating and nourishing exfoliator that tones and boosts metabolism.



## ELEMIS FACIALS

### **PRO-COLLAGEN AGE DEFY FACIAL – 30 MINUTES £80 / 60 MINUTES £110**

This anti-aging facial tackles fine lines and wrinkles with clinically proven age-defying benefits of marine charged Padina Pavonica and Red Coral. Targeted facial massage encourages optimum cellular function for nourished, younger looking skin.

### **PRO-GLOW SUPERFOOD RADIANCE - 30 MINUTES £80 / 60 MINUTES £110**

A nutritional boost rich in superfoods and essential minerals designed to pack stressed, dull skin with energising, detoxifying actives. Clinically proven to leave skin plumper, radiant and lit up with good health.

### **PEPTIDE4 PLUMPING PILLOW FACIAL - 30 MINUTES £80 / 60 MINUTES £110**

Using the ELEMIS Peptide4 Plumping Pillow Facial is a hydrating sleep mask which drenches the skin in moisture, helping to pump the skin as it fights the visible signs of tired, dull skin; mask helps seal in hydrating actives, so your skin is softer and plumped with moisture in the morning.

### **PRO-GLOW FOR MEN - 30 MINUTES £80 / 60 MINUTES £110**

The hard-working facial for ageing, dehydrated skin and tired eyes. It maximises cell regeneration, a Multi-dynamic facial massage sequences boost circulation, whilst scalp and foot massage deeply relaxing.

### **BIOTEC FACIAL WITH ENERGIZING LIGHT THERAPY -**

#### **60 MINUTES £120 / 75 MIN £130**

Revolutionary, non-invasive, anti-aging facial treatment using the latest innovation of the BIOTEC machine, works to switch the skin natural cellular energy. Choose from seven personalised facials to suit your needs and end the facial with a 15-minute energising light therapy that will further boost collagen production.

## KALLIMINI TREATS (30 MIN) £80

Personalised Express Facial

Well-being Back Massage

Free Style Deep Tissue Back Massage

Shoulder, Neck and Scalp Massage

Frangipani Scrub

Frangipani Foot Treatment

## KALLIMA HEALTH AND LIFESTYLE

Personal Training

Private Pilates

Private Yoga

Reflexology



# PAMPER YOUR GROUP AT THE KALLIMA SPA

The perfect place for your next getaway. Let us curate the perfect day spa get away with our rejuvenating treatments, healthy lunch and nibbles plus access to our luxurious spa amenities.

Create customised group spa packages for 6 or more people including:

- Bachelorette Parties
  - Birthday Celebrations
  - Girls Get Away
  - Employee Celebration
- Request Proposal



## FOR YOUR RESERVATIONS

CALL US

02083801590

email: [hiltonsyonguestservices@hilton.com](mailto:hiltonsyonguestservices@hilton.com)

## **ARRIVAL**

Please kindly arrive for your spa appointment minimum of **30 minutes before your booked time** to enable you to complete our new medical form with COVID 19 information and prepare for your spa appointment.

To allow a deep cleaning and disinfection of all spa treatment areas after every treatment; We offer our guests a suitable treatment schedule, please be advised we will not be able to guarantee treatments extension or rebooking for late arrivals and discounts will not be applicable. Treatment Time will start from our therapists welcome and will include guest consultation and after care.

## **FACILITIES**

Personal digital lockers may be provided during your visit, we advise that you please remove any jewellery and leave all your valuable items on the lockers provided; we regretfully unable to take any responsibility for any damage or loss of items within the facility.

## **MOBILE PHONES**

The use of mobile phones within the spa facility is prohibited, except in designated areas.

## **GIFT CERTIFICATES / CARD PAYMENTS**

If you are booked through a Gift certificate, please kindly bring and present a copy of your voucher / certificate at Spa Reception on your arrival.

A 50% pre-payment will be required for your booked spa appointment prior to arrival; you will need to present the card you used for payment upon check-in at spa reception for verification and completion to settle the remaining balance on your booking.

## **GENERAL HEALTH**

It is your commitment to notify us of any medical condition which we should know, a recent admission to hospital, pregnancy (12 weeks below) or operation or any invasive physical treatments; or if your medical condition consequently change after booking has been confirmed.

If you have symptoms of Covid 19 or know allergy, pregnant or have had cancer within the last 5 years, or suffer from a medical condition such as high blood pressure or diabetes. We recommended if you please consult your doctor prior to visiting the spa.

## **ALL OUR GUEST AND MEMBERS MUST STRICTLY COMPLY WITH OUR SAFETY PROTOCOLS.**

- Hand sanitizer will be available as you enter the club & spa.
- All members & guests are required to shower before using the pool / whirlpool and prior to attending their spa session.
- Treatments: your therapists will wear necessary PPE masks and may use disposable gloves during your treatments.
- We will encourage a good ventilation within the spa and doors may be left partly opened, available doors & windows will be opened in the spa wet and gym areas.
- We recommend please to bring your personal water bottles.
- Please place your used towels & robes on the plastic lined trolleys.
- Consumption of any Alcohol or Food is not allowed in the Spa, Wet & Gym areas.



## DIETARY REQUIREMENTS

We will persevere to deliver special dietary requirements; however some specific cuisine may not be available; and an alternative item will be offered, please advise us of any Dietary requirements in advance. *\*\* additional charges may apply for specific outsourced items – we will advise if this is the case.*

Please visit: [londonsyonpark.com](http://londonsyonpark.com) for more information on our Food & Beverage offers.

## ADDITIONAL CHARGES

Our guests may unwind and enjoy the use of our 15m heated swimming pool, whirlpool, aroma steam room and sauna, a life fitness equipped gym facilities along with our 10 luxurious treatment rooms including three couple's suite.

Couples room are not guaranteed for any treatments bookings. *\*\*facilities charges applies*

A non- hotel guest receiving a treatment 60 minutes or more will be able to use the facilities complimentary 2 Hours PRIOR to their spa treatments.

Hotel residents may use the spa facilities for a £20 charge 90 mins access per visit.

Hotel guests we offer day spa packages and day spa passes.

Day Pass for use of spa facilities is £80 (weekend) /£60.00 (weekday) per person for 4 hours.

## CANCELLATION, REBOOKING OR ALTERATION

If you must cancel, re-schedule or alter an appointment, please advise our reservations desk 24 hours in advance / 48 hours for peak (Friday - Sunday) and 3 days for groups of 5 or more.

No-shows and cancellations received less than 24 / 48 hours and 3 days (groups of 5 or more). Will be charged for all scheduled services at full price.

Once all bookings are confirmed we will not be able to guarantee availabilities on rebooking or alterations; an additional charge may be incurred for any changes on your bookings or package inclusions.

Please kindly arrive for your treatments appointment minimum of 30 minutes before your booked time to enable you to complete a consultation form and prepare for your spa treatment.

## OUR HAPPY PLANET COMMITMENT

May we please request all our Guests and Members to practice discretion when using the Towels, Robes and Slippers and to be mindful of the items we throw away, re-use plastic items whenever possible.

